

# COMPANY PROFILE



**NEXXIS**

**ENGINEERING LIMITED**

## NEXXIS ENGINEERING LIMITED

Accra, Kumasi & Kibi  
nexxisengineeringltd@gmail.com  
0243757888/0246366379  
Est. JUNE, 2020

CONSULTING GEO-INFORMATION ENGINEERS, DRONE  
TECHNICIANS AND PROFESSIONAL LAND SURVEYORS

# Company Overview

**NEXXIS Engineering Limited** is a privately owned company founded as a local investment in the year June 2020, and registered under the Companies Act 1963 (Act 179) of the Republic of Ghana.

**NEXXIS Engineering Limited** was established with a main objective to provide technically sound and economically viable solutions in the area of Earth Sciences using modern techniques.

**NEXXIS Engineering Limited** consists of a well-experienced team of registered surveyors and a professional management team. Our team has the technical expertise, equipment and the technology to deliver the best solutions to our clients; and to our clients' our company is known to be reliable, delivers projects on time and within a agreed budget, and adheres to the highest ethical industry standards.

# Mission, Vision & Values

## MISSION STATEMENT

Our mission is to promote profitability for our clients and ourselves. “Nexxis Engineering Limited” was established with a goal to be a client oriented, technology oriented, people focused, quality oriented, adaptive and innovative in its approach.

## OUR VISION

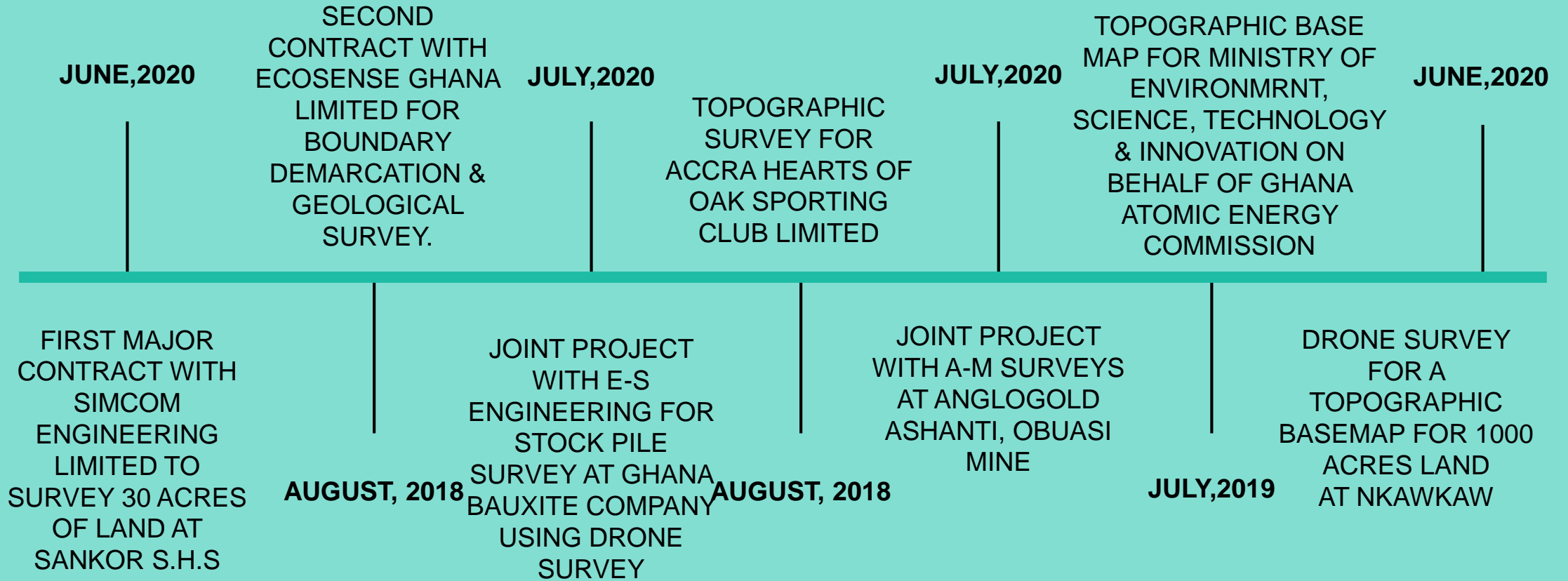
“Our vision serves as the framework for our road map and guides every aspect of our business by defining what we need to accomplish in order to continue achieving sustainable and quality growth. We are determined to be the preferred surveying and survey consultancy service provider in the country and world at large.

# OUR CORPORATE PHILOSOPHY

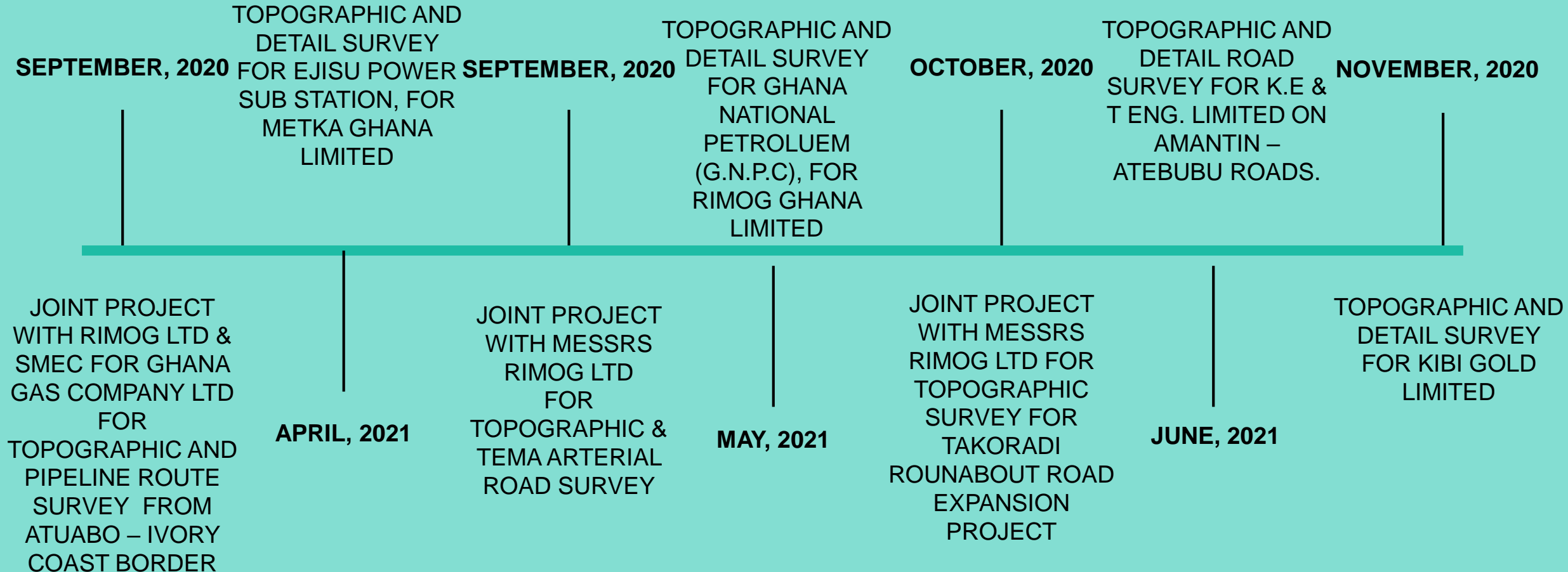
Our philosophy is simple. We will:

- Provide our services that are the very best available in the market and will never compromise on service standards on any circumstances;
- Deliver a level of service that exceeds our clients' expectations;
- Develop and embrace new technologies and techniques to the advantage of our clients and our business;
- Ensure the company's services conserve the integrity of the environment;
- Educate & train the youth interested in this growing field, thereby contributing to the community-at-large.

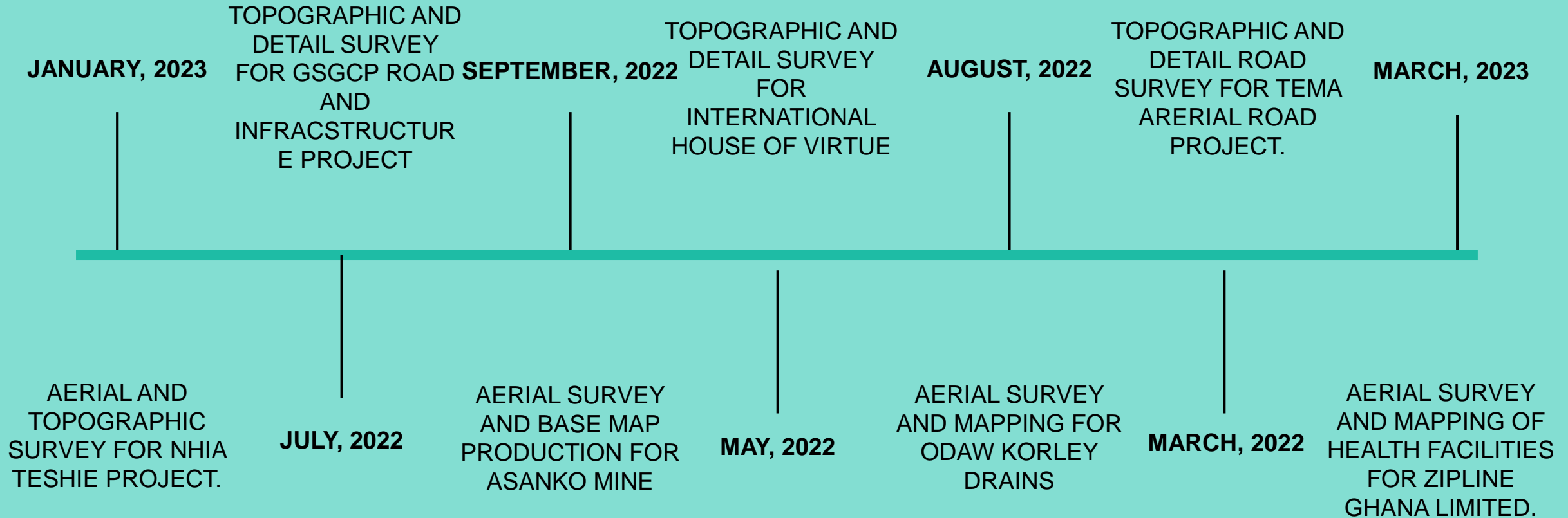
# Company History



# Company History



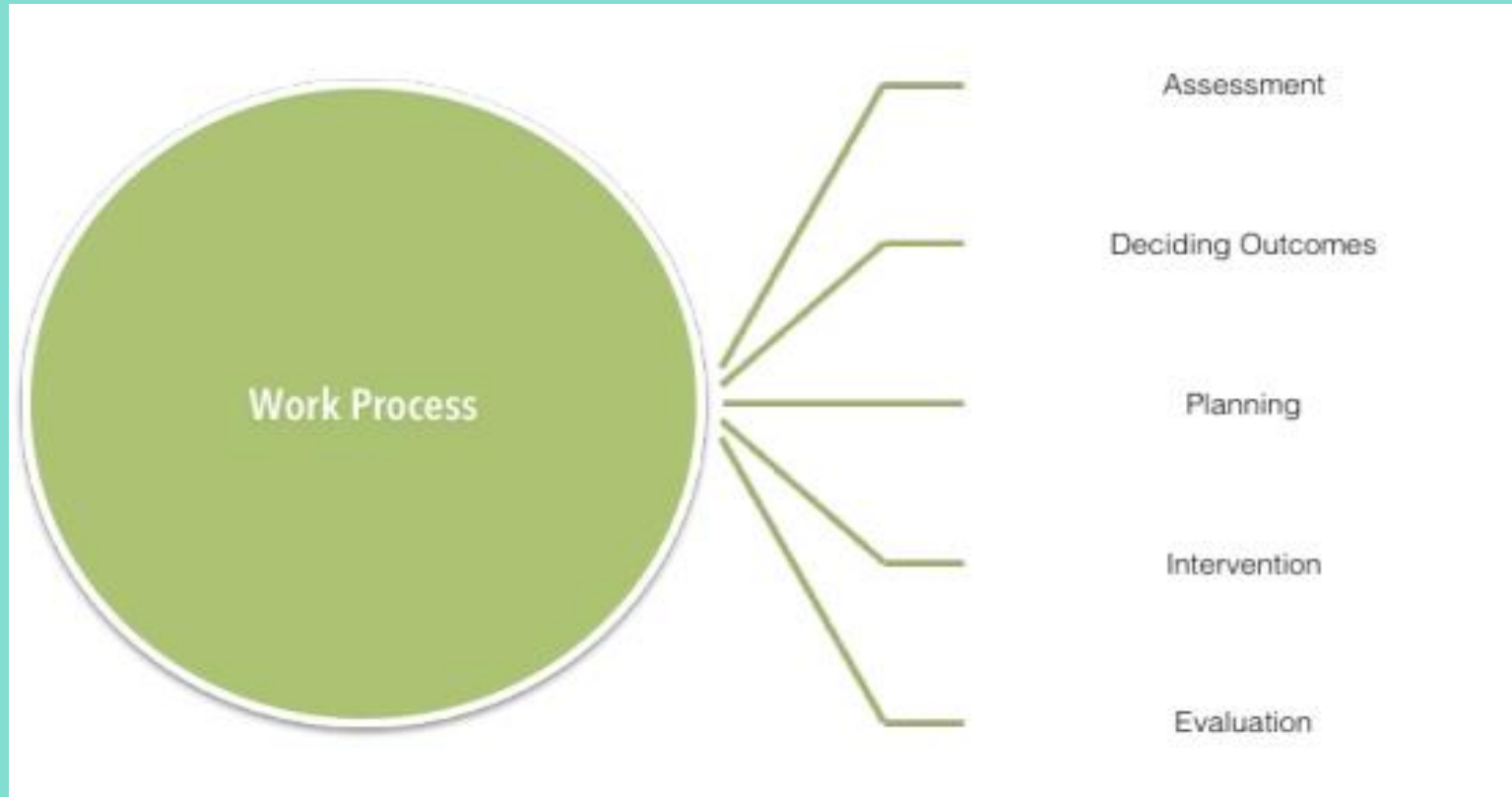
# Company History



# KEY PERSONEL

PERSONNEL		QUALIFICATION AND INSTITUTION ATTENDED	POSITION
SIMON PETER OKYERE		B.Sc. Geomatic Engineering, University of Mines, Tarkwa	Director / Geomatic Engineer
EDMUND AMANING AMOAKO		B.Sc. Geomatic Engineering, University of Mines, Tarkwa PMP Kofi Annan Institute of Technology	Director / Geomatic Engineer/ Drone Technician/ GhIS Membership No. 2028
KWABENA ATTA ASSIEDU		B.Sc. Geomatic Engineering, University of Mines, Tarkwa	Geomatic Engineer/ Drone Pilot
GEORGE FIANKO		B.Sc. Geomatic Engineering, University of Mines, Tarkwa PMP Kofi Annan Institute of Technology	Geomatic Engineer
KWABENA NYAME ADDO		B.Sc. Geomatic Engineering, University of Mines, Tarkwa	Geodetic Engineer /GIS Specialist

# OUR WORK PROCESS



We work closely with our clients from project initiation through to the end. While projects differ on timeframe and budget, the steps in the process tend to stay almost the same.

Prior to project initiation, we work with our client to establish a budget that will reflect a cost effective approach for the project's goals and objectives. Then, we coordinate all aspects of the project to ensure that the technical resources are allocated to the timeline so that the project is on time and within budget.

# What Makes[Nexxis Engineering Services] Different

## **Nexxis Engineering Services:**

**Client oriented**

**Technology driven**

**Innovative, Adaptive, Creative**

**Attaining excellence**

## **Nexxis Engineering Services:**

**Competitive Rates**

**Prompt delivery**

**Adheres to all Safety  
Practices**

**Maintains a high level of accuracy  
and precision**

# SERVICES

At Nexxis Engineering Limited, we have a professional and dedicated team of Surveyors, Survey Technicians, Draftsmen and Project Management staff that have a combined 20 years' experience in the industry across the African continent. Our expertise allows us to offer a range of small and large scale services such as:

- 1.Route line Surveys (Roads, Rail Lines, Power lines, Water Line, Gas Lines etc).
- 2.Compensation Surveys (of Farms / Crops and Buildings) and Resettlement Surveys
- 3.Cadastral Surveys for Regularization of Title (Deeds and Land Title).
- 4.Engineering Surveys for the Construction of Dams, Roads, Buildings, etc
- 5.Bathymetric and Topographic Surveys
- 6.Topographical surveys, GPS control and Ground Modeling services.
- 7.Volumetric Analysis (Volumes for cut and fill, muck shift, stock piles, quarries & landfills)
- 8.Traffic Studies Data Collection
- 9.Development of Geographic Information System (GIS) Applications.
- 10.GPS/GNSS/GIS Training
11. Geological Surveys

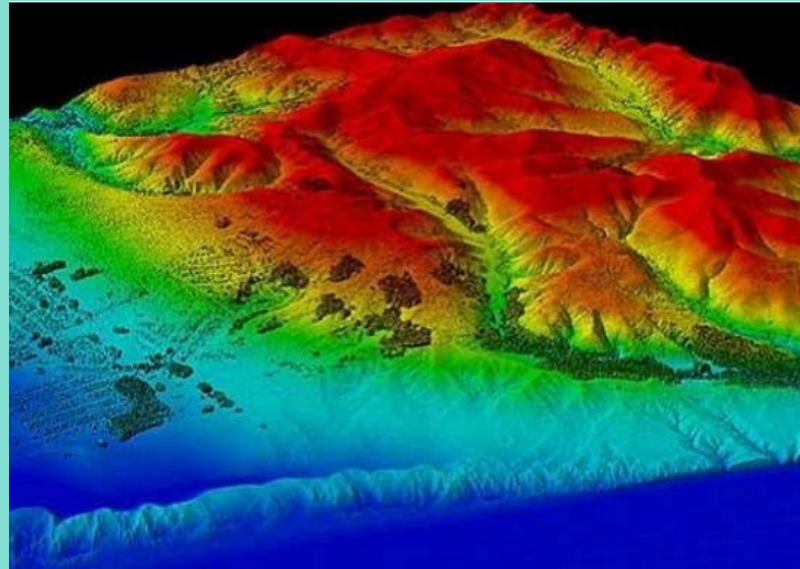
# SERVICES (2)

## PHOTOGRAMMETRIC (DRONE) SERVICES:

- Orthomosaic Production
- Feature Capture
- D.E.M, D.S.M, D.T.M Model
- 3D MODEL

## LIDAR SERVICES:

- Lidar Raw Data Calibration/ Processing/ Flight Planning
- Classification/ Bare surface creation (slope, contours etc.)



# TECHNICAL RESOURCES

## SOFTWARE EXPERTISE

- AutoCAD Civil 3D
- ArcGIS
- Quantum GIS
- Agisoft Metashape Professional
- Pix4D Mapper, Matic & Survey
- Bentley Context Capture
- 3D Survey
- Topcon Tools & Magnet
- Trimble Business Center

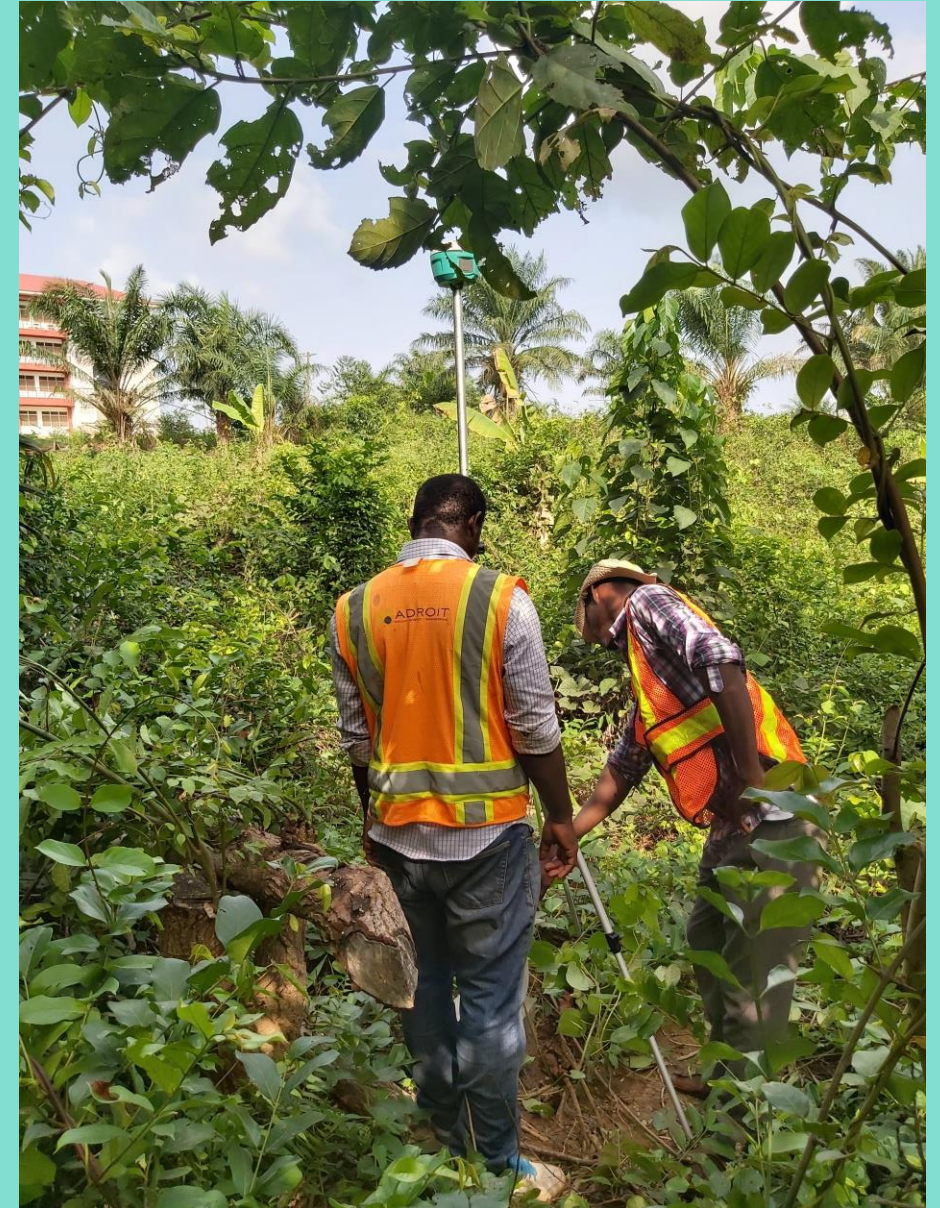
## SURVEY EQUIPMENT

- Hi-Target V90 GNSS RTK GPS
- HI-Target V200 GNSS RTK GPS
- Garmin etrex 30x Handheld GPS
- Phantom 4 Pro V2 drone
- Phantom 4 RTK Drone
- Automatic Level Instrument





# GPS CONTROL & TOPOGRAPHIC SURVEYS



# SETTING-OUT WORKS FOR CONSTRUCTION SURVEYS



# TOPOGRAPHIC SURVEY FOR ROAD CONSTRUCTION



# AERIAL (DRONE) SURVEY & MAPPING

